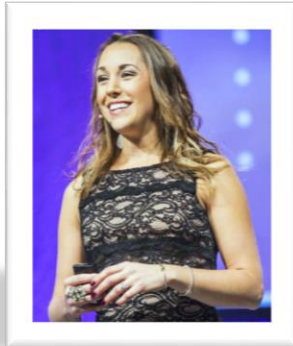


CORPORATE SPEAKERS



Brandi Murphy,
nutraMetrix Director of
Sales and Field Training



Sarah Tugender,
National Sales
Manager

CHARLESTON, SC
JUNE 22-24, 2018

EMBASSY SUITES by HILTON

5055 International Blvd.

North Charleston, SC 29418

Phone: (843) 747-1882

Hotel Link: <http://bit.ly/2iKU1P4>

Group Rate: \$169.00

Please use Group Code: NMC

Cut Off Date for Group Rate: May 23, 2018

****Please mention you are attending the Market
America/nutraMetrix Training****

Additional nutraMetrix Field Leaders will be announced at a later date!

TRAINING SCHEDULE

Friday - June 22, 2018:

Registration for NC training is from 7:30am - 9:00am Friday morning.

Friday - June 22, 2018:

NC Training begins promptly at 9:00am and doors open at 8:30am. Lunch is on your own. Session concludes at 6:00 pm. Networking Social is from 6:00pm to 8:00pm.

Saturday - June 23, 2018:

NC Training begins promptly at 9:00am and doors open at 8:30am. Lunch is on your own. Session concludes at 6:00pm.

Sunday - June 24, 2018:

NC Training begins promptly at 9:00am and doors open at 8:30am. Lunch is provided for you. Post Exam will be given on Sunday. Please schedule your flight arrangements so that you may stay for the full training time on Sunday. Session concludes at 4:30pm.

IMPORTANT INFORMATION – PLEASE READ CAREFULLY!

- Agenda is subject to change.
- Seats are non-transferable to other NC trainings dates except for extreme emergencies and on case by case basis only.
- Tickets are non-refundable.
- Your name badge must be worn at all times to enter in and out of the training room and for Sunday's luncheon-no exceptions! Replacements for lost badges must be purchased at \$395.00 each!
- The entire three days attendance is required for NC status. If you leave before class ends, you may be required to retake NC training. Please see onsite corporate staff for any emergencies regarding early dismissal of training.
- Video or audio recordings of the NC training are not allowed.
- Attire is business casual- no jeans, shorts, sneakers, workout attire or baseball caps.
- Children and guest are not allowed in or around the training room.

For additional questions or concerns, please email us at nutraMetrix@nutraMetrix.com.